



With a beautiful two-color weave--not to mention wrinkle resistance--this poplin shirt has a pleasing texture and truly impresses in the office.

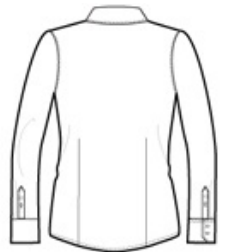
- 3-ounce, 60/40 cotton/poly
- Open collar with Y-shaped slim placket
- Front and back darts
- Pearlized smoke buttons, pearlized white buttons on Chambray Blue, Navy Frost, and Pink Orchid
- Adjustable, button-through sleeve plackets
- Notched cuffs

**CARE INSTRUCTIONS**

MACHINE WASH COLD WITH LIKE COLORS, ONLY  
NON-CHLORINE BLEACH, TUMBLE DRY LOW, WARM  
IRON IF NEEDED

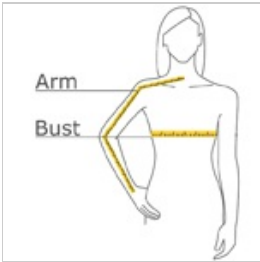


front



back

**HOW TO MEASURE**



**BUST**

With arms down at sides, measure around the upper body, under arms and around the fullest part of the bust.

**ARM**

Place hand on hip. Start at the center of the back of the neck and measure across the shoulder, to the elbow, and then down to the wrist.

**SIZE CHART**

	XS	S	M	L	XL	XXL	3XL	4XL
Size	2	4/6	8/10	12/14	16/18	20/22	24/26	28/30
Bust	32-34	35-36	37-38	39-41	42-44	45-47	48-51	52-55
Arm	30 - 30 3/4	30 3/4 - 31 1/2	31 1/2 - 32	32 - 32 1/2	32 1/2 - 33	33 - 33 3/8	33 3/8 - 33 3/4	33 3/4 - 34 1/2

**COLOR INFORMATION**

							
Chambray Blue PMS NO MATCH	Dark Cactus Green PMS 7736 C	Deep Blue PMS 7545 C	Grape Harvest PMS 7666 C	Navy Frost PMS NO MATCH	Pink Orchid PMS 7431 C	Red Oxide PMS 505 C	Soft Black PMS 425 C